



FILL IN HOLES AND CRACKS OF ANY SIZES

INTERIOR USE

APPLICATION PROCESS



1

Preparing the substrate

Open the crack, clean the substrate and remove dust. Substrate must be hard, cohesive, clean, sound and dry.

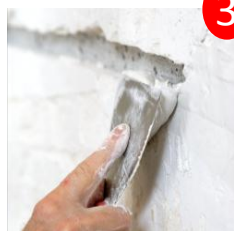


2

Preparing the filler

Preparation of **INTERIOR FILLER** 5 kg :

- Pour 2,5 liters of water in the mixing bucket
- Stir progressively the 5 kg powder into the water with a mixer or manually.



3

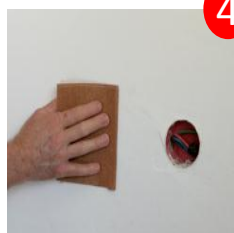
Applying the filler

- To fill cracks, apply the filler perpendicularly with a blade. Work across the crack leftward, then rightward. Run a layer of filler along the length of the crack, and leave to dry.



- For Holes, fill the bottom with thick application using a filling knife.

- Once it is dry, overfill the crack making the surface a bit swelled.



4

Finishing work

Sand, if necessary, once the filler is dry.

Overcoating

Paint over with any conventional paint, including epoxy and polyurethane paints or cover with wall paper.

For more details, please refer to datasheets