



## TREAT AND PROTECT RAW MASONRY AND SURFACES FROM DAMP BEFORE COATING WITH PAINT

EXTERIOR & INTERIOR USE

### APPLICATION PROCESS

1



#### Preparing the substrate

Strip covered substrates down to the masonry. Substrate must be hard, cohesive, clean, sound, dry or damp but not dripping.

2

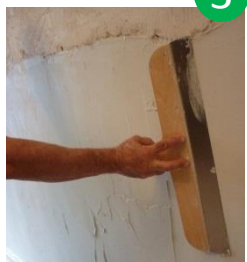


#### Preparing the filler

Preparation of **HUMI-BLOCK** for 6 or 20 kg :

- Application with a trowel : mix 1 part of water with 2,5 parts of powder
- Application by brush : mix 1 part of water with 2 parts of powder

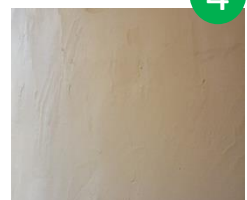
3



#### Applying the filler

- No primer allowed. Application with a trowel in 1 or 2 coats or by brush in 2 criss-cross applied coats. Total thickness should be minimum 2 mm for surface levelling.
- If second coat is necessary (brush or trowel application) apply 12 to 24 H as soon as the first one is hard. No sanding required.

4



#### Overcoating

Overcoat with any type of water borne coating (moisture vapour permeable) minimum V2 classified as per NF EN 1062-1 or any Toupret surface filler.

*For more details, please refer to datasheets*